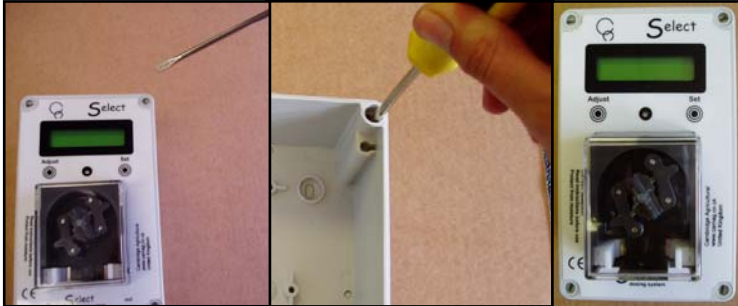


At-a-Glance Guide for Select 480 Doser (NRV Sept 05)

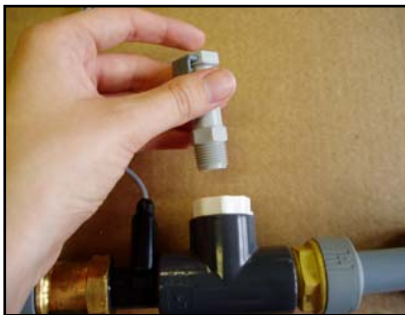
This guide is intended as a quick reference only and is no substitute for reading the full instructions provided with your Doser. Please read the full instructions before using your Doser.



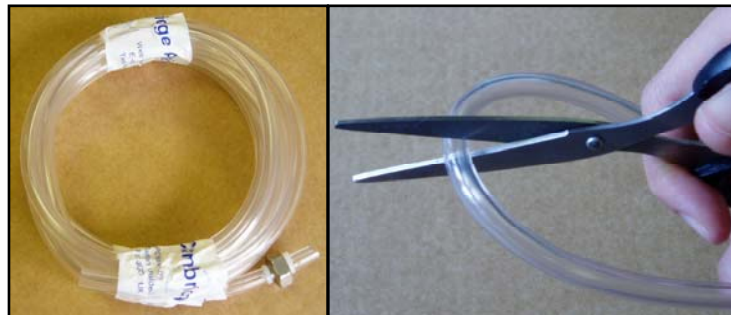
Remove the cover of the Select Doser. Mount the doser in a convenient position. Replace cover.



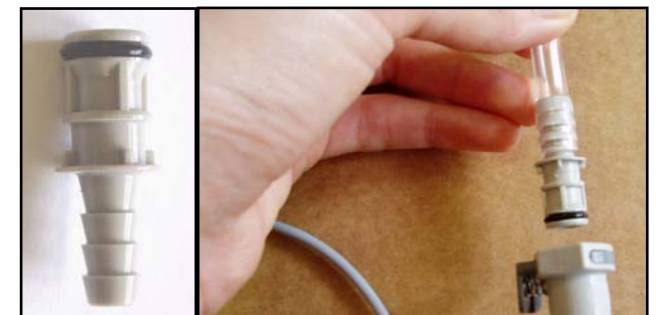
Install flow sensor in water line. Ensure arrow marked on sensor corresponds to direction of flow. Assemble the T-piece and reducer. Install after the flow sensor.



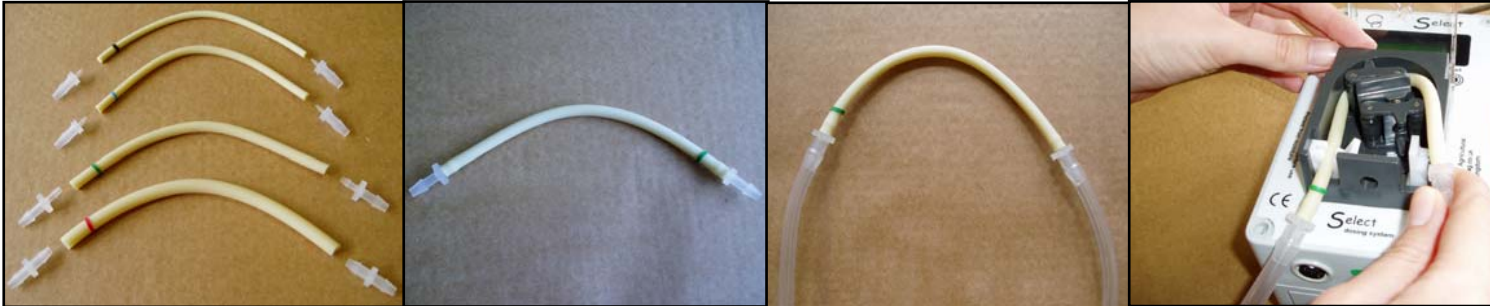
Insert female coupling into reducer. This is the point of product injection.



Unpack the 3m delivery tube. Cut the delivery tube to appropriate lengths.



Insert the male coupling into the end of the delivery tubing. This will connect to the female coupling (after the flow sensor) to complete the injection assembly.



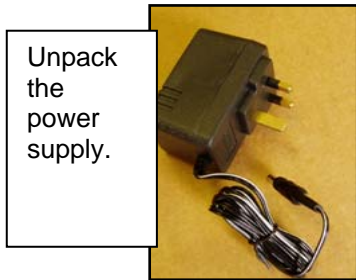
Unpack the pump tubes. Select the tube which is appropriate for your application. Insert the tube connectors in each end of the pump tube. Place the pump tube in between the two sections of cut delivery tube. Install the pump tube in the Select Doser, working from left to right turning the rotor by hand. Ensure the tube is held by the white clamps and seated evenly.



The weighted end is placed in the product.



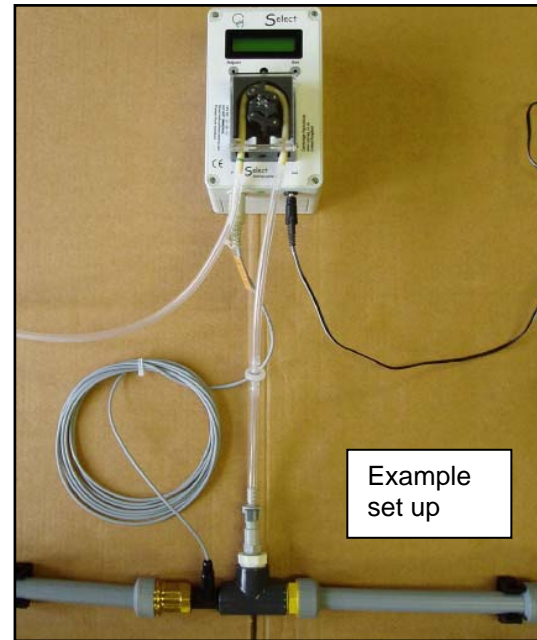
To fit the non-return valve, cut the delivery tube on the outlet side of the pump, insert the NRV as shown after blowing through it to check correct orientation



Unpack the power supply.



Connect the power supply and flow sensor to Doser.



Example set up



Follow the on-screen instructions.